

ACTUATOR SERIES ALC100

ESBE Series ALC is suitable for valves Series VLD.



OPERATION

ESBE series ALC in combination with ESBE valves series VLD are designed especially for applications in heating, air-conditioning and refrigeration. Versions with proportional (0..10V / 0..20 mA) signal or 3-Point (increase/decrease) signal are available. Supply voltage 24 VAC or 230 VAC. Force 300 N.

The actuator is simple to install. It is designed for direct fitting on ESBE's control valves series VLD with a stroke of 5.5 mm. No adaptor kit is required.

The actuators series ALC is automatically adjusted for the actual valve stroke and has a built-in force limitation.

SUITABLE CONTROL VALVES

- Series VLD122, VLD132
- Series VLD125, VLD135

FUNCTION

– The Actuator

The actuator receives a control signal from a controller. Linear movement is transmitted by a screw via a gear wheel to the stem of the valve.

– Manual operation

The actuator is simple to operate manually by the knob on the top.

– Position indicator

The position of actual valve position are set by a red indicator on the housing.

TECHNICAL DATA

Supply voltage: _____ See table
 Ambient temperature: _____ -5°C* - +55°C
 Media temperature: _____ max. 130°C
 Ambient humidity: _____ max. 95% RH, non condensing
 Enclosure rating: _____ IP 54
 Protection class: _____ I (230V)
 _____ II (24V)
 Stroke: _____ 5.5 mm
 Duty cycle: _____ max. 60%/h
 Weight: _____ 0.5 kg
 Cable length: _____ 1.5 m

Material

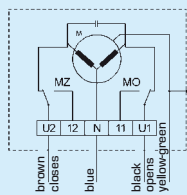
Cover: _____ Plastic

Housing: _____ Metal

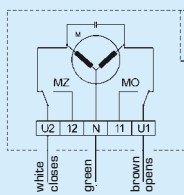
* If the actuator is used in applications with media temperatures below 0°C, the valve should be equipped with a stem heater.

CE LVD 73/23/EEC
 EMC/86/336/EEC

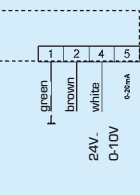
WIRING



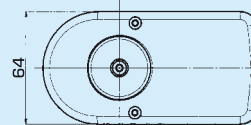
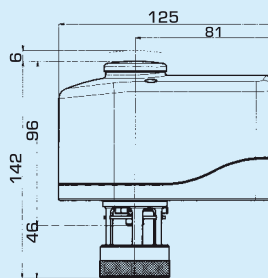
Series ALC151



Series ALC152



Series ALC153



ACTUATOR SERIES ALC151, 3-POINT CONTROL SIGNAL 230VAC

Art. No.	Reference	Supply voltage	Force [N]	Running time [s]	Stroke [mm]	Power consumption [VA]	Note	Weight [kg]
2210 02 00	ALC151	230 VAC, 50Hz	300	66	5.5	3.0		0.5
2210 04 00	ALC151	230 VAC, 50Hz	300	33	5.5	3.0		0.5

ACTUATOR SERIES ALC152, 3-POINT CONTROL SIGNAL 24VAC

2210 01 00	ALC152	24 VAC, 50Hz	300	66	5.5	1.5		0.5
------------	--------	--------------	-----	----	-----	-----	--	-----

ACTUATOR SERIES ALC153, PROPORTIONAL CONTROL SIGNAL 24VAC

2210 03 00	ALC153	24 V AC/DC, 50/60Hz	300	13	5.5	5.0	1)	0.5
------------	--------	---------------------	-----	----	-----	-----	----	-----

Note 1) 0...10V, 2...10V, 0...20mA, 4...20mA control signal.